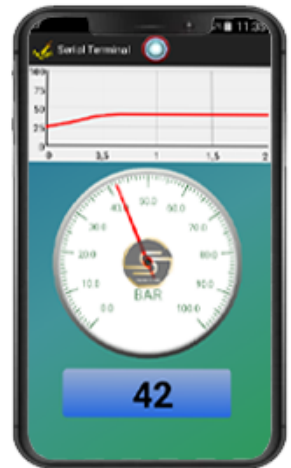


INSTRUCTIONS MANUAL

CBOXSMART



INDEX

1 DOWNLOAD MPS - App- SPADA

2 App- SPADA ANDROID VERSION

A CONFIGURATE YOUR SMARTPHONE

B App - SPADA - ANDROID INSTALLATION

C HOW TO USE App- SPADA- ANDROID

D COMMON TECHNICAL ISSUES - ANDROID

3 App- SPADA WINDOWS VERSION

A App - SPADA - WINDOWS INSTALLATION

B HOW TO USE- App -SPADA - WINDOWS

C COMMON TECHNICAL ISSUES - WINDOWS

Download MPS - App- SPADA¹

- 1 Click on the “REGISTRATION FORM” button and fill in the following form

REGISTRATION FORM

APP FOR SMARTPHONE FOR DIGITAL TEST COUPLING MPS
Fill in the form to access the download

Test coupling MPS

With this App for Smartphone is possible to see the pressure and extract excel value of pressure

Company * Required fields
DICSA

Email:
marketing@dicsaes.com

Surname
Marin

Name

- 2 You will receive an email notification of your password to download App - SPADA

PASSWORD

CLICK ON DOWNLOAD
BOTTON

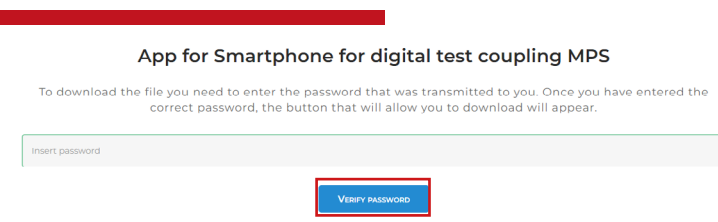
App for digital test coupling MPS

Dear user,
you have requested to download our App for MPS digital test coupling.
In order to download it, click the Download button and fill the password shown below.

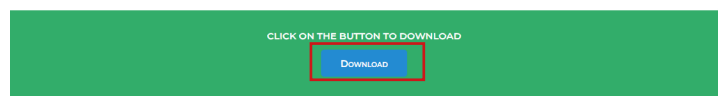
Password: password

Download

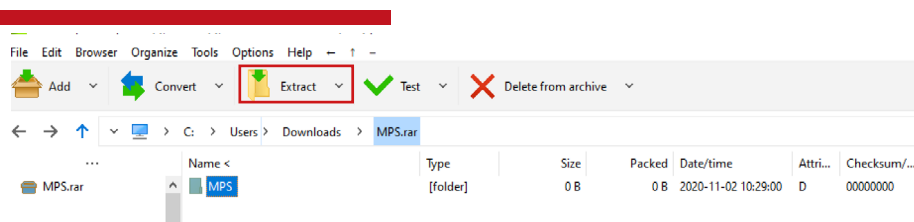
- Enter the password and click on “Verify Password” button **3**



- Click on “Download” button **4**



- Extract files contained in a Zip document **5**



App

SPADA

ANDROID VERSION

CONFIGURATE YOUR SMARTPHONE

ACCESS DIRECTLY FROM YOUR SMARTPHONE
MPS.RAR > ANDROID

Attention! Required operating system:
Android 4.4 – 4.4.4 KitKat or successive, without root.

This App IS NOT COMPATIBLE with Iphone

REQUIRED HARDWARE:

- Android Phone compatible with OTG USB. In case if you are not sure about the compatibility, download the app “USB OTG Checker” or equivalent from Play Store and verify.
- Wire OTG (acronym of On-The-Go). Is not a simple wire.



PRELIMINARY SETUP OF SMARTPHONE:

- Activate option **USB DEBUGGING** on the Smartphone

*Below procedure is not a standard procedure for all Smartphones, but depend of the Android version and of manufacturer of the phone..

Example procedure for Android 6.0 version or successive

- ACTIVATE USB DEBUGGING ANDROID :

> Go to **Setting** >

> **About dispositive (or About phone)** >

> **About software** >

> Tap 7-8 times or more on **Build**

Number (or Serial Number) until Developer mode is activated

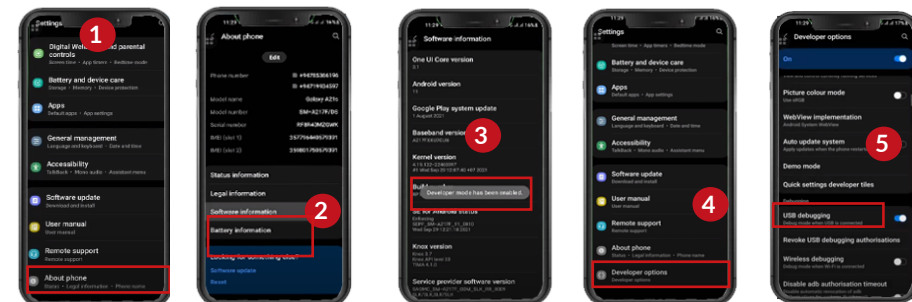
> After that, come back to Setting and go to

Developer Option >

> Activate **USB DEBUGGING** >

For further technical information, we recommend you to introduce your model of mobile followed by activate usb debugging on YouTube

VIDEO TUTORIAL



B APP - SPADA - WINDOWS INSTALLATION

- Acces to **ANDROID** file **1**
- Copy the file **SPADA.apk** to the smartphone **2**
- Run the installed program **3**

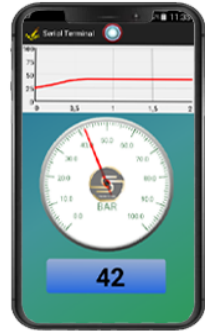
C HOW TO USE: App- SPADA- ANDROID

- **Access** to SPADA App, previously installed **1**
- **CONNECT THE DIGITAL TEST COUPLING** **2**
 - > **Smartphone** >
 - > **OTG Wire** >
 - > **Standard Wire 2 m** >
 - > **Test coupling MPS** >



- 3** Agree the terms and Press OK

- 4** Automatically the device will be activated



D COMMON TECHNICAL ISSUES - ANDROID

- If you intend to monitor the pressure for a long time, it is essential to disable all the energy saving and application optimization options applied to the Spada program. Otherwise, the timing necessary for correct operation could be altered.
- If you run applications that bring the Spada program in the background, the connection is no longer guaranteed.

App SPADA WINDOWS VERSION

APP - SPADA - WINDOWS INSTALLATION **A**

1 ACCESS TO WINDOWS FILE

Attention! Required operating system:
Windows 7 Sp1 or successive, excluding server versions and
installations on virtual machine.

Do not connect any device to PC

WINDOWS 7

- 2 Select **Windows Driver** file
- 3 Set up the program Setup.exe. 32 or 64bit, in relation to
installed operating system.

** [Check here your operating system computer](#)*

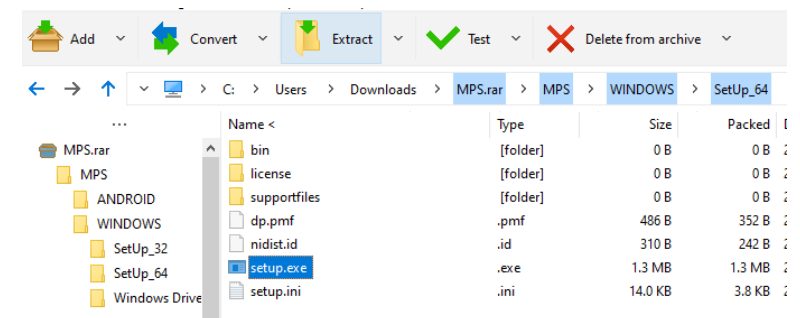
- 4 Run the executable file **setup.exe**

WINDOWS 10

- 2 Run the program Setup.exe. 32 o 64bit, in relation to
installed operating system.

** [Check here your operating system computer](#)*

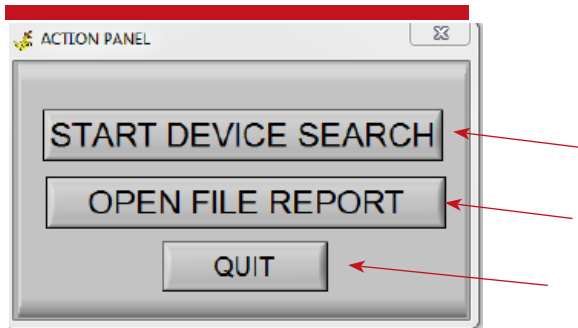
- 3 Run the executable file **setup.exe**



B HOW TO USE App- SPADA - WINDOWS

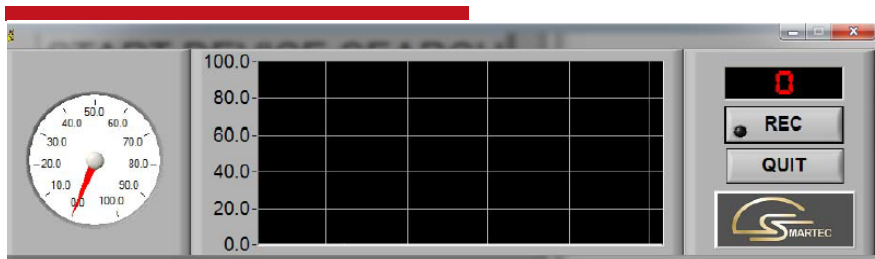
Connect the test coupling. 1

Run the program **SPADA.EXE**, previously installed. 2



Press "**START DEVICE SEARCH**", to start the search. 3

The following screen will appear at the end of the search: 4



C COMMON TECHNICAL ISSUES - WINDOWS

- If you intend to monitor the pressure for a long time, it is essential to disable the screensaver and all the energy saving options.

- As described by Microsoft Technical Support, in some cases the USB ports may stop working. In this case, restart the PC or refer to the instructions described in:

<https://support.microsoft.com/en-us/topic/usb-port-may-stop-working-after-you-remove-or-insert-a-usb-device-1eaf82a6-04b1-2604-f096-2345d9c215ef>